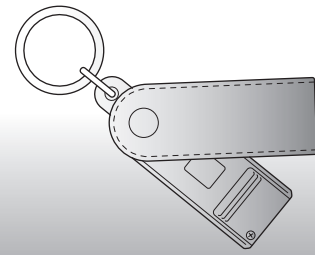


Key Finder

User Manual



Thank you for purchasing the Toyota Key Finder. Please read instructions carefully before use and use your Key Finder properly. Please be sure to read "1. Symbols and Safety Precautions" before use. Be sure to retain this User Manual in a readily accessible place for future reference.

Compatible Devices

Refer to the compatibility list shown in the Toyota Key Finder app in the Apple App Store.

1. Symbols and Safety Precautions

If you ignore what the symbols indicate and mishandle your Key Finder, the following could occur. Please read the following warnings prior to operating your Key Finder.

	WARNING	Indicates the possibility of death or serious injury of the user.
	Operating Precautions	Indicates the possibility of physical damage.

Graphic Symbols

		Indicates what should not be done.
		Indicates what must be done.

WARNING

- Do not disassemble or modify your Key Finder.
 - It could cause a burn, injury, electric shock, fire, overheating, product failure or fluid leakage.
 - Disassembled or modified product may void the warranty.

Not following the below warnings could lead to fire, overheating, fluid leakage or product failure.

- Do not use your Key Finder near fire (e.g. gas stove, heater), explosive or combustible gas (e.g. acetylene), petroleum substance (e.g. gasoline, kerosene), organic solvent (e.g. thinner) or explosive dust.
- Do not use, store or leave your Key Finder in hot places (e.g. near fire or heater, in direct sunlight, in sun-heated car).
- Avoid excessive shock to the product such as dropping, kicking or placing heavy objects on the product.
- Do not wet or drop into water. It could cause the internal circuit or battery to short.
- Do not use or store your Key Finder in the following places:
 - Places with extreme low/high temperatures, extreme humidity (where condensation may occur), dusty places
 - Outside in the rain or snow
 - Places where shock or vibration, strong magnetic force or static electricity could be generated
 - Acidic, alkaline or salty environments
- Do not insert any foreign objects into the Key Finder.

WARNING

- If you notice an unusual smell, heating, discoloration or deformation during use or storage, stop using the device immediately and remove the battery.
- Keep your Key Finder away from children. Battery cover screw has been added for your safety. If a child has swallowed the battery, contact a physician immediately.
- If you notice fluid leakage from the battery, do not touch the leaked fluid. If the leaked fluid gets into eyes or mouth, or on clothes, do not rub. Rinse thoroughly with clean water and consult a physician immediately. It could cause blindness or physical disabilities.
- Turn the power off (See 4-3. **Power OFF**) in places such as a hospital or airplane where the use of radio waves is prohibited. On public transportation such as a bus or train, follow the instructions of the respective agencies. It could cause the malfunction of an electromedical equipment or an electronic device for aircrafts. For the use of the product in a medical facility, follow the instructions of the respective medical facilities. We are not responsible for any accident, disaster, or loss caused by the use of this product.
- If you or someone nearby to you currently uses or will use a medical device such as a pacemaker, be sure to confirm any impact of radio waves with a physician or manufacturer of such medical device. The radio waves this product emits could have an impact on the medical device.

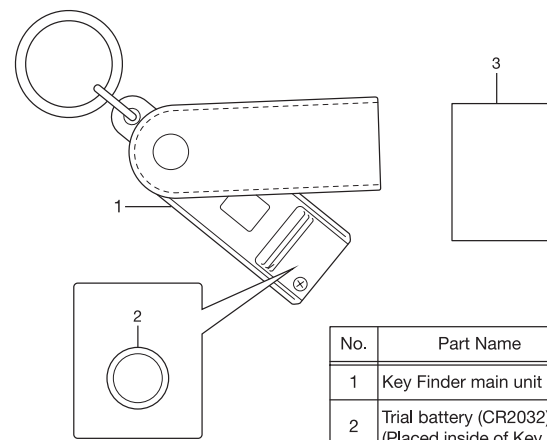
2. General Notes

2-1. Operating Precautions

- This product does not guarantee that the compatible device used or a key attached to this product will not be lost.
- We assume no responsibility for any damages resulting from the use of this product.
- When the product is used with another device, follow the instructions for that device.
- This product can be connected wirelessly to a cellular phone.
- Setting method or precautions vary depending on the device. When using this product, read and follow the instructions carefully for the device to which this product will be attached.
- To clean the Key Finder, wipe off with a soft damp cloth.
- Do not use organic solvents such as benzine or paint thinner, which could cause deformation or discoloration.
- Remove the battery from the Key Finder if you do not plan to use it for a long period of time.

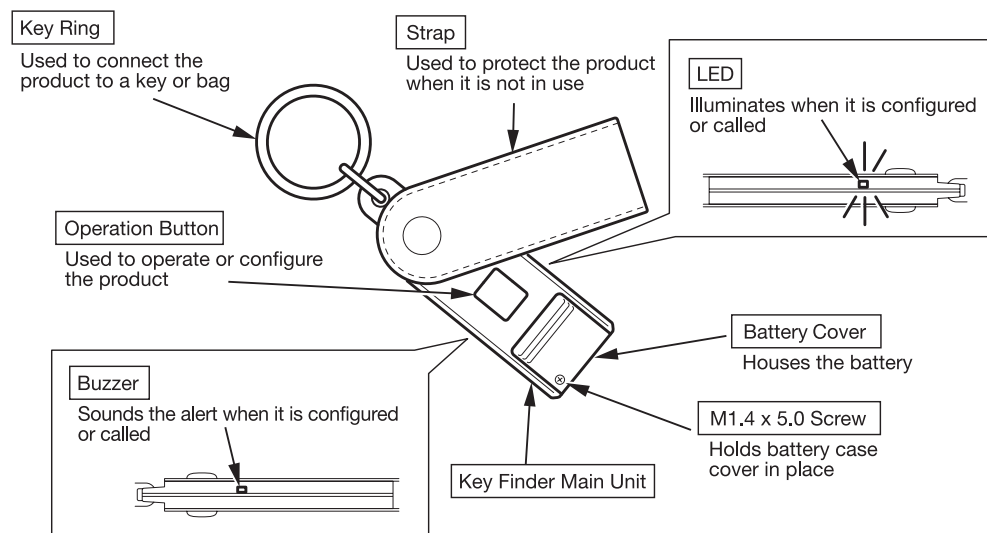
3. Parts and Features

3-1. What is Included



No.	Part Name	Qty
1	Key Finder main unit	1
2	Trial battery (CR2032) (Placed inside of Key Finder)	1
3	User Manual (this booklet)	1

3-2. Names of Parts

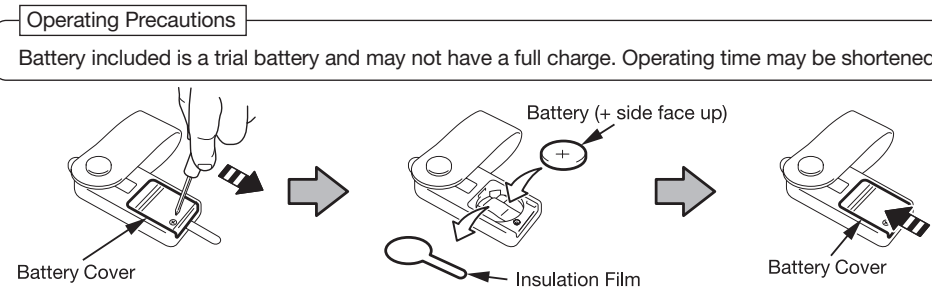


4. Before Use

Although the screen image may vary depending on the model, follow the same steps.

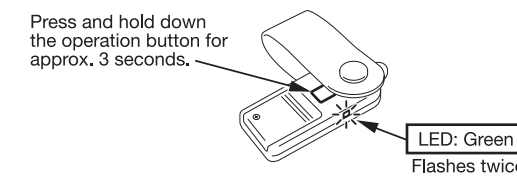
4-1. Installing the Battery

- Remove the screw holding the battery cover in place.
- Slide and remove the battery cover.
- Remove the insulation film underneath the battery and replace the battery with + side face up.
- Replace battery cover and screw.



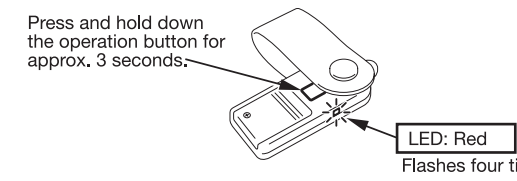
4-2. Power ON

Press and hold down the operation button of Key Finder for approximately 3 seconds. The LED light will flash green twice, indicating the power is now ON.



4-3. Power OFF

Press and hold down the operation button of Key Finder for approximately 3 seconds. (When pressing the operation button, the buzzer will sound once.) The LED light will flash red four times, indicating the power is now OFF.



4-4. Installing the App on Your Compatible Device

Locate Toyota Key Finder in the Apple App Store and install. Key Finder icon will look like this

4-5. Activating Bluetooth on Your Compatible Device

On your compatible Apple device, turn Bluetooth to the ON position. (For details, refer to the user manual for your compatible device.)

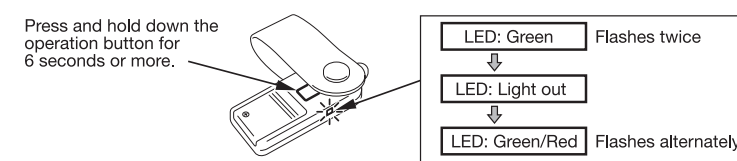
iPhone
Select **Settings** → **General** → **Bluetooth** and select **ON** for **Bluetooth**.

4-6. Pairing Your Key Finder

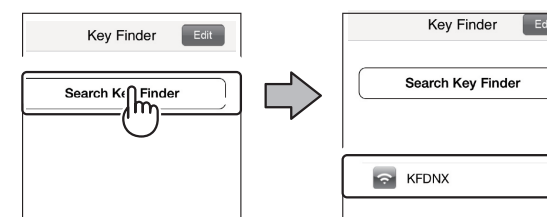
To use your Key Finder, you need to pair your Key Finder with your compatible Apple device. In order to connect, the distance between your Key Finder and device needs to be less than 20 inches.

- Make sure your Key Finder is turned OFF before starting. Press and hold down the operation button on your Key Finder for 6 seconds or until the LED flashes green/red alternately. "LED flashes green light twice" → "Light out" → "LED flashes green/red light alternately."

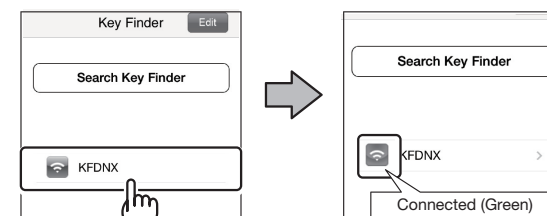
! If the Key Finder power is ON when you hold down the button, it will not go into this mode. Make sure your Key Finder is turned OFF before starting. (See 4-3. **Power OFF**)



- On your Apple device, tap on the Key Finder icon to launch it.
- Tap on Search Key Finder. When Key Finder is found, KFDNX will be displayed.



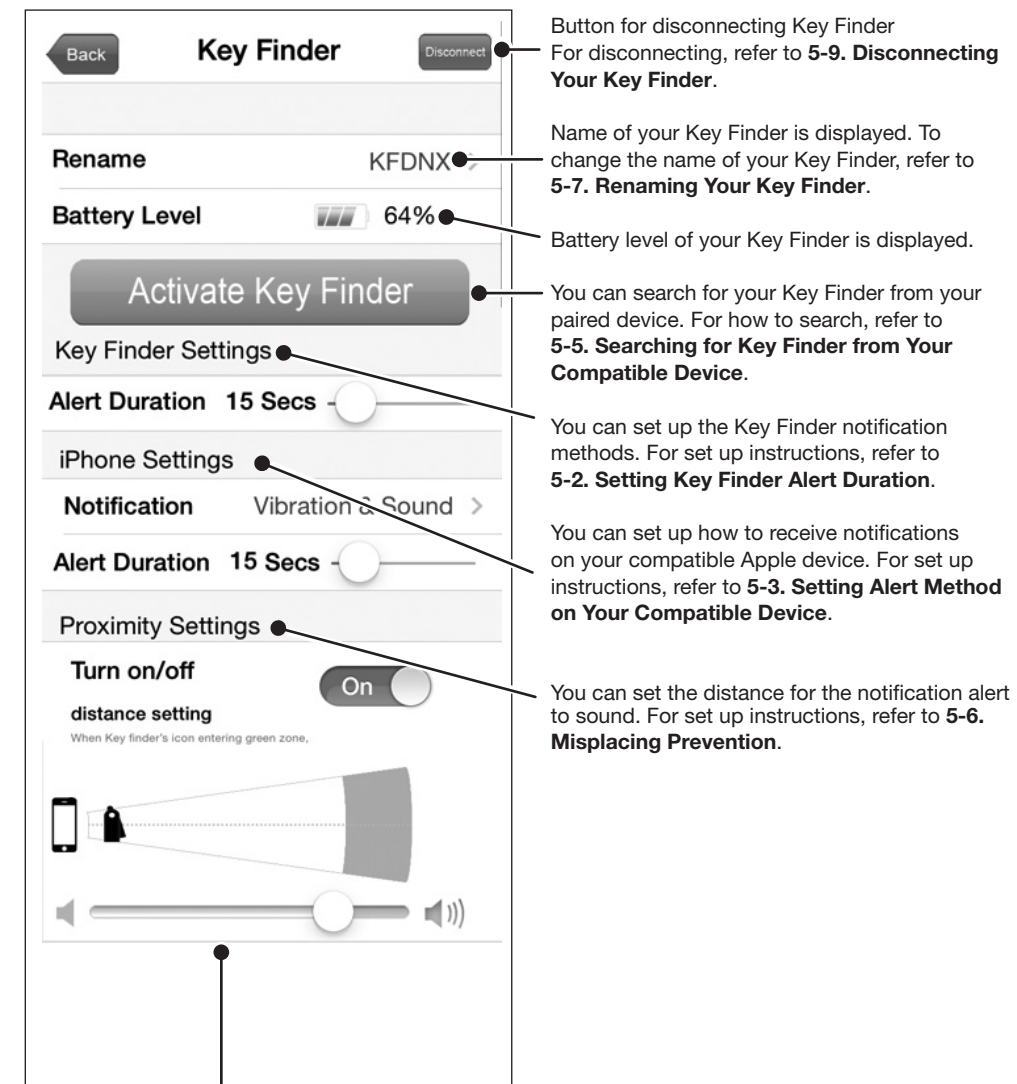
- Tap on **KFDNX**. If the icon turns Green (indicating it is connected), the pairing is complete.



5. Using Key Finder

Although the screen images may vary depending on the model, follow the same steps.

5-1. Key Finder Settings Screen



Button for disconnecting Key Finder. For disconnecting, refer to 5-9. **Disconnecting Your Key Finder**.

Name of your Key Finder is displayed. To change the name of your Key Finder, refer to 5-7. **Renaming Your Key Finder**.

Battery level of your Key Finder is displayed.

You can search for your Key Finder from your paired device. For how to search, refer to 5-5. **Searching for Key Finder from Your Compatible Device**.

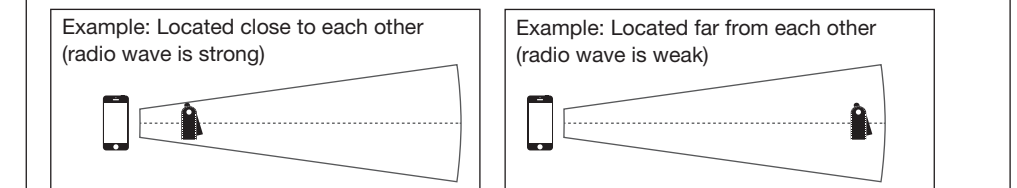
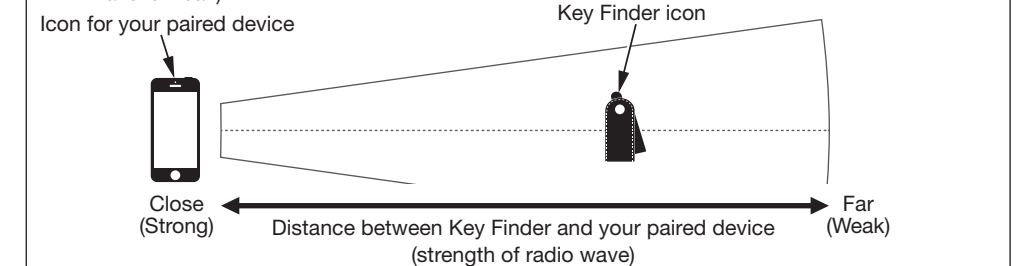
You can set up the Key Finder notification methods. For set up instructions, refer to 5-2. **Setting Key Finder Alert Duration**.

You can set up how to receive notifications on your compatible Apple device. For set up instructions, refer to 5-3. **Setting Alert Method on Your Compatible Device**.

You can set the distance for the notification alert to sound. For set up instructions, refer to 5-6. **Misplacing Prevention**.

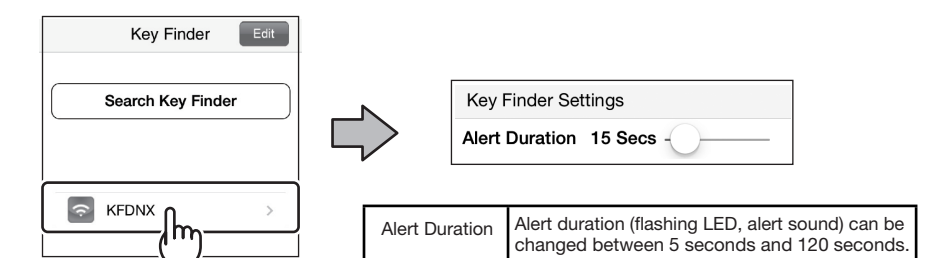
The distance between your Key Finder and paired device (strength of radio wave) is displayed on the distance setting screen.

- If the icon for your paired device and Key Finder icon are close: Located close to each other (radio wave is strong)
- If the icon for your paired device and Key Finder icon are far: Located far from each other (radio wave is weak)



5-2. Setting Key Finder Alert Duration

You can change the Key Finder alert duration.
1. Once your Key Finder is connected, tap on the desired device to adjust the alert duration.

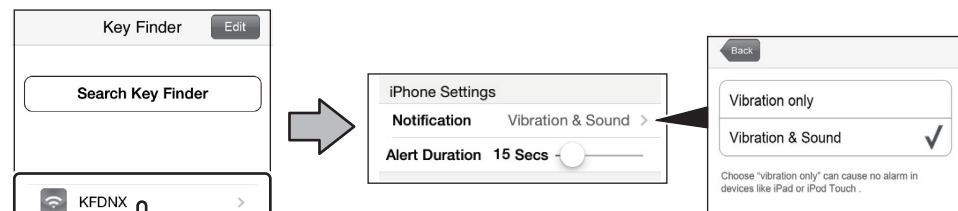


Alert Duration | Alert duration (flashing LED, alert sound) can be changed between 5 seconds and 120 seconds.

5-3. Setting Notification Methods on Your Compatible Device

You can change the notification methods on your compatible device.

1. Your Key Finder must be connected. Tap the desired Key Finder for which you want to change the notification methods settings on the screen.

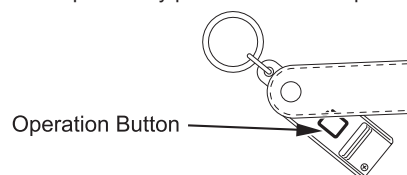


Notification	Vibration Only	Your paired device will notify you with vibration only.
	Vibration & Sound	Your paired device will notify you with vibration and sound.
Alert Duration		Alert duration (flashing LED, alert sound) can be changed between 5 seconds and 120 seconds.

NOTE: The **Notification** setting allows you to select **Vibration Only** or **Vibration & Sound**. If you select **Vibration Only**, you will not be able to receive alerts on iPad or iPod touch.

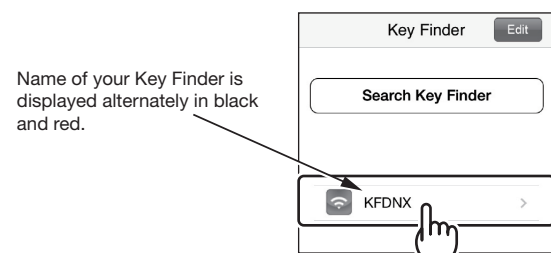
5-4. Search For Your Paired Device Using Your Key Finder

1. Your Key Finder must be previously paired. Press the operation button on your Key Finder.



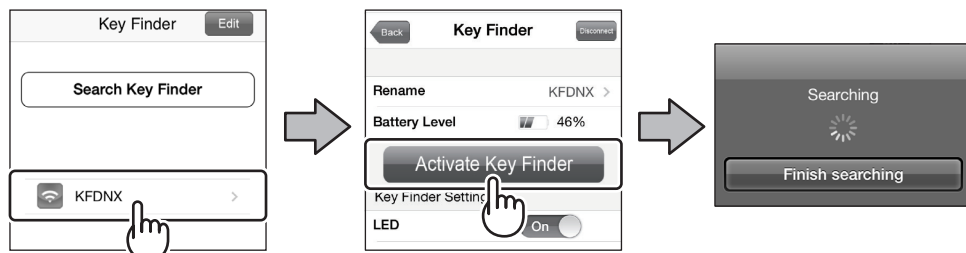
2. When your paired device is found, it will alert you with a sound and/or vibration.

3. You can stop the alert by tapping the screen of your paired device. The name of your Key Finder is displayed alternately in black and red. After tapping the screen, the name of your Key Finder will turn black.

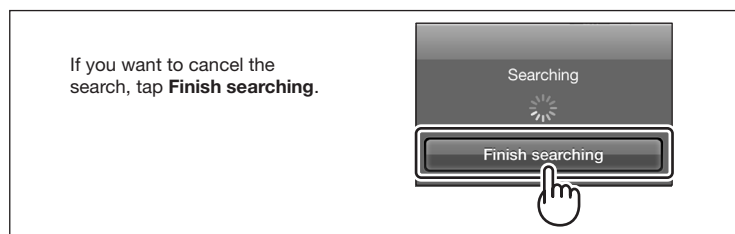


5-5. Search For Your Key Finder Using Your Paired Device

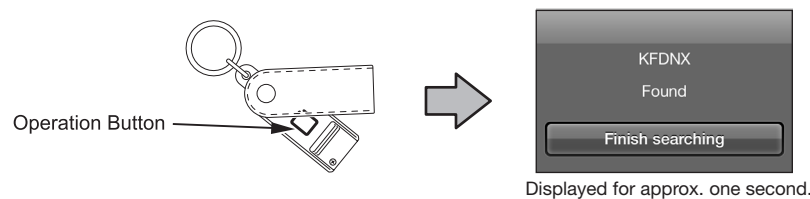
1. Your Key Finder must be previously paired. On the screen of your paired device, tap the Key Finder you want to find, then tap **Activate Key Finder**. The screen will change to the **Searching** screen as it starts scanning for the selected Key Finder.



2. When the Key Finder is found, the Key Finder will sound the alert.



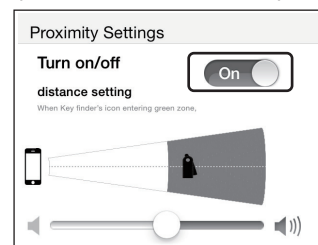
3. Press the operation button on the Key Finder to stop the alert sound. Your paired device will display the **Found** screen for approx. one second.



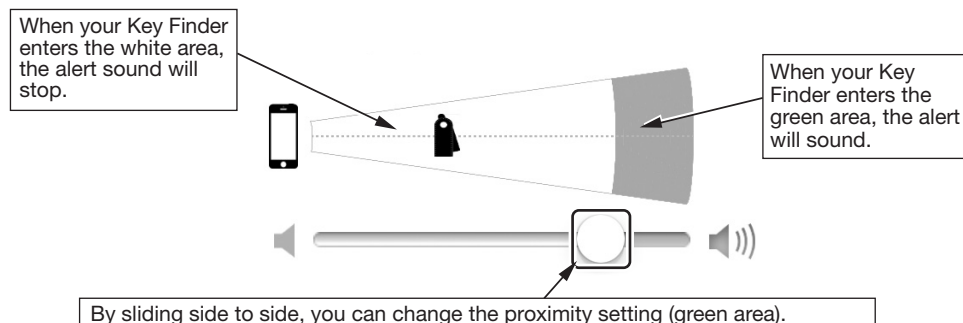
5-6. Misplacing Prevention

When the distance between your Key Finder and previously paired device becomes greater than the preset distance, your Key Finder and previously paired device will sound an alert to notify you (if function is turned **ON**).

1. Open your Key Finder settings screen and select **ON** for **Proximity Settings**. (Scroll down to the lower part of the screen for this option.)



2. Set the distance to sound the alert. (Refer to **5-1. Key Finder Settings Screen** for the position of the Key Finder icon.)

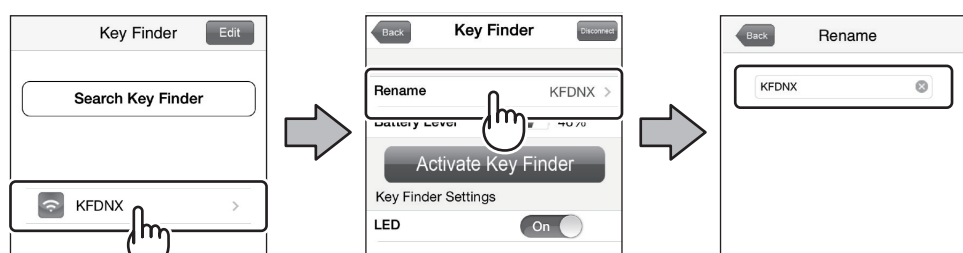


- The position of the Key Finder icon indicates the strength of the radio wave in the form of changing distance. When there is an obstruction that compromises the radio wave environment, it is interpreted as meaning there is greater distance between the Key Finder and paired device, and the Key Finder icon moves further to the right.
- The radio wave strength will vary depending on the environment that surrounds your Key Finder. Set the distance using your current environment as standard.

5-7. Renaming Your Key Finder

You can change the name of your Key Finder which is displayed on your paired device.

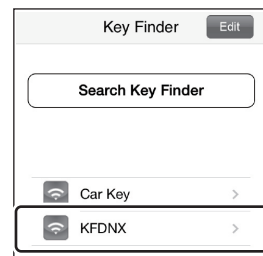
1. On the setting screen, tap the Key Finder you want to edit.
2. Tap **Rename** and enter a desired name via the new screen.



5-8. Connecting Second and Subsequent Key Finders

You can connect up to eight Key Finders to your paired Apple device. However, you will not be able to call more than one unit at the same time.

1. Connect a new Key Finder. (Refer to **4-6. Connecting Your Key Finder**)
2. Your new Key Finder is displayed on your paired device.

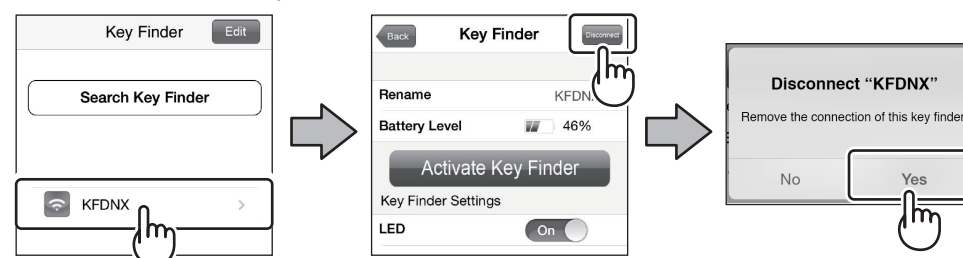


3. To be able to distinguish it from the Key Finder(s) connected earlier, rename your new Key Finder. (Refer to **5-7. Renaming Your Key Finder**)

5-9. Disconnecting Your Key Finder

You can disconnect selected Key Finder.

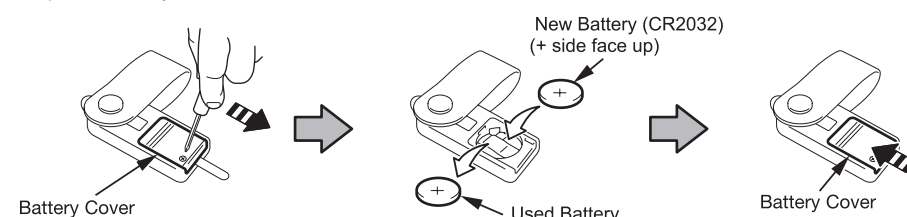
1. On the setting screen, tap the Key Finder you want to disconnect.
2. Tap the **Disconnect** button at the upper-right corner of the screen. In the new window, tap the **Yes** button. The selected Key Finder will be disconnected.



5-10. Changing the Battery

Before changing the battery, read the safety precautions in Section 1.

1. Remove the screw holding the battery cover in place.
2. Slide and remove the battery cover off the Key Finder.
3. Remove the old battery and replace with a new one (CR2032) + side face up.
4. Replace battery cover and screw.



5-11. List of Operations

List of Key Finder Operations

	Operation Button	LED	Alert
Power ON	Press and hold down the button for approx. 3 seconds.	Green Flashes twice	-
Power OFF	Press and hold down the button for approx. 3 seconds.	Red Flashes four times	When pressing the operation button, it will sound once.
Connect Key Finder	Press and hold down the button for at least 6 seconds from power OFF.	Green/Red Flashes alternately	-
Low Battery		Red Flashes for approx. 30 seconds ↓ Repeat Light Out Light out for approx. 30 seconds	-

List of Key Finders Behaviors (See **5-2. Setting Key Finder Alert Methods**)

	LED	Alert
Search Key Finder from paired device	Red Flash: 5-120 seconds	5-120 seconds
The distance between paired device and Key Finder becomes greater than the preset value	Red Flash: 5-120 seconds	5-120 seconds

6. Specifications

Model	KFDNX Series
Name	Toyota Key Finder
Bluetooth Version	Bluetooth VER 4.0 +LE
Profile	Proximity 1.0 / Find Me 1.0 Profiles
Communication Distance	66 ft (will vary depending on the usage environment)
Transmission Frequency Range	2.4 GHz-2.4835 GHz
Battery	CR2032
Standby Time	Approx. 200 days (will vary depending on the usage environment)
External Dimensions	Main unit: 3.27 x 0.94 x 0.35 in
Weight	Approx. 0.7 oz (without battery)
Operation Temperature/Humidity	42°F-104°F / 20%-80%
Storage Temperature/Humidity	14°F-140°F / 20%-80%

Appearance or specifications of the product may change for improvement without notice.

7. Troubleshooting

Problem	Troubleshooting
I pressed the operation button while the power is ON, but my device does not sound the alert or vibrate.	Is the power on your device ON? Turn the power of your paired device on.
	Is the battery low? (When the battery is low, LED repeats "flashing red light for 30 seconds and off for 30 seconds.") Replace the battery.
	Are your Key Finder and paired device too far away from each other? They must be within a 66 foot range.
It makes alert sounds while deactivated. Or the alert sounds unexpectedly.	Is there any obstruction between your Key Finder and paired device? If it does not work even when there is no obstruction, one or more of the following situations, listed under 7-1. Situations in which the function may not work properly , may be suspected.
	Are the Key Finder and paired device in a situation where they cannot communicate? When the Key Finder and paired device cannot communicate, the alert will sound when the proximity setting is "ON". One or more of the following situations, listed under 7-1. Situations in which the function may not work properly , may be suspected.
The app does not work.	Restart the paired device.

7-1. Situations in Which the Function May Not Work Properly

This product uses low powered radio waves.

Under the following circumstances, the communication between the Key Finder and paired device may be obstructed and the functions may not work properly.

- When the battery is low
- When there is a television tower, broadcast station, power plant, gas station, airport or large display nearby which generates strong radio waves or noise
- When there is equipment that uses 2.4 GHz frequency band nearby. (Microwave, Wireless LAN, Amateur radio, etc.)
- When you are carrying wireless equipment such as a transceiver, cellular phone or cordless phone.
- When you are carrying this product along with any of the following electronic devices that emits radio waves. (Radio wave remote control, mobile terminal, PC or tablet, digital audio player, game console, etc.)
- When this product is in contact or covered with any of the following metal materials:
 - Any product that uses aluminum foil
 - Medium such as Blu-ray, DVD or CD
 - Metal bag or purse
 - Safe
 - Coin
 - Inside of vehicle or trunk, etc.

8. FCC Warning

This device complies with part 15 of the FCC Rules. Operation is subject to the following two conditions:

1. This device may not cause harmful interference, and
2. This device must accept any interference received, including interference that may cause undesired operation. Changes or modifications not expressly approved by the party responsible for compliance could void the user's authority to operate the equipment.

Part 15B compliance statement:

NOTE: This equipment has been tested and found to comply with the limits for a Class B digital device, pursuant to part 15 of the FCC Rules. These limits are designed to provide reasonable protection against harmful interference in a residential installation.

This equipment generates, uses and can radiate radio frequency energy and, if not installed and used in accordance with the instructions, may cause harmful interference to radio communications. However, there is no guarantee that interference will not occur in a particular installation.

If this equipment does cause harmful interference to radio or television reception, which can be determined by turning the equipment off and on, the user is encouraged to try to correct the interference by one or more of the following measures:

- Reorient or relocate the receiving antenna.
- Increase the separation between the equipment and receiver.
- Connect the equipment into an outlet on a circuit different from that to which the receiver is connected.
- Consult the dealer or an experienced radio/TV technician for help.

Changes or modifications not expressly approved by the party responsible for compliance could void the user's authority to operate the equipment.

9. Warranty

This accessory is warranted for 12 months, regardless of mileage, from the original date of purchase. This warranty only covers defects in materials or workmanship. Replacement of the Key Finder battery is the customer's responsibility and is excluded from this warranty.

10. Trademarks

- Names and logos of iPhone, iPad, iPad mini, iPod, iPod Touch and App Store are the trademarks or registered trademarks of US Apple Inc. in the United States and other countries.
- Bluetooth is the trademark or registered trademark of Bluetooth SIG, Inc.
- The names, product names and service names mentioned on the product or in this manual are the trademarks or registered trademarks of their respective companies. However, TM symbols are not expressed in the main text of this manual.

11. Proper Disposal

- Discard or recycle this product in a way determined by the law of your local government.
- When you discard a battery that came with the equipment, insulate the positive and negative electrodes with vinyl tape and recycle or discard in the way determined by the law of your local government.

This product uses a lithium battery.

